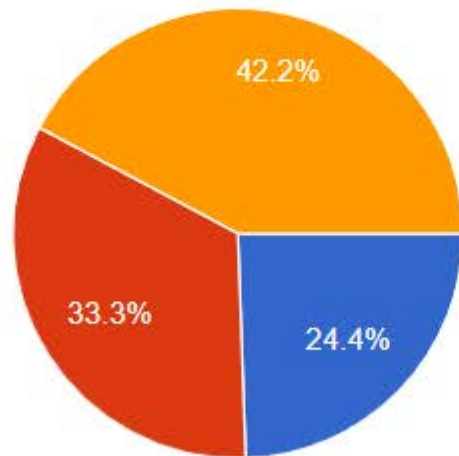





How long have you worked with this organization?

45 responses

 Copy



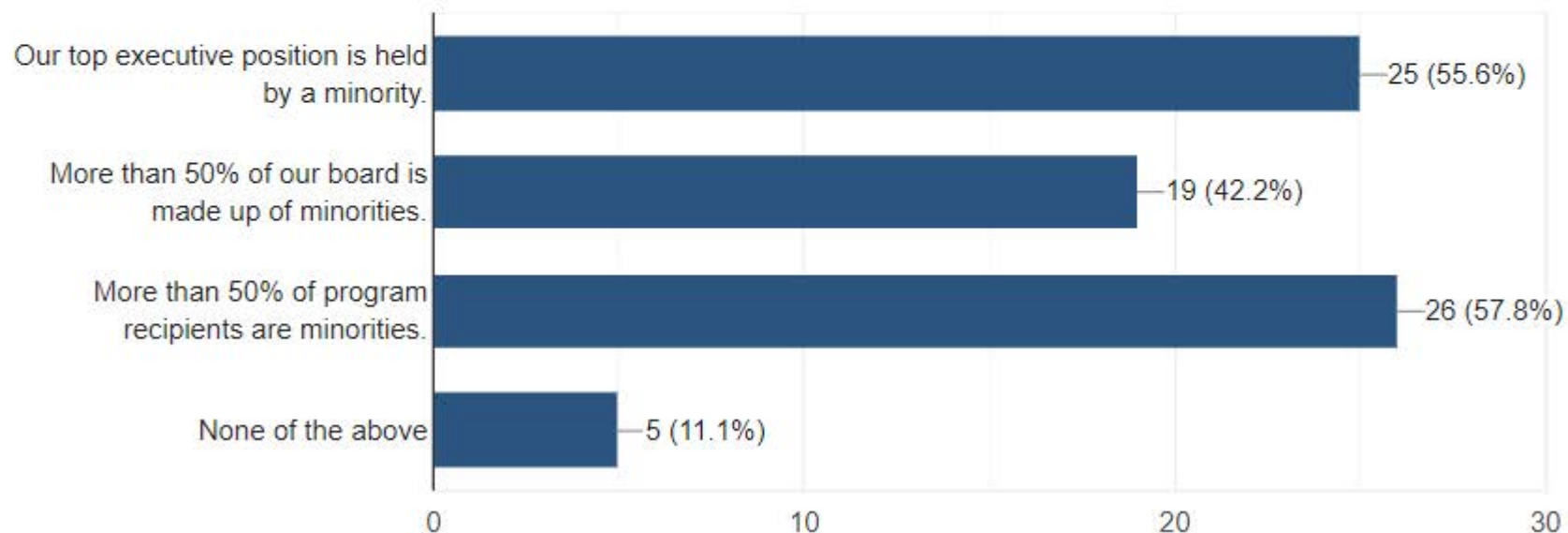
-  0-2 years
-  3-5 years
-  More than 5 years

The following question pertains to minority leadership and service. For the purpose of this question, minority is defined as women, people of color, non-gender conforming individuals, LGBTQ+ individuals, and immigrants.



Which of the following best describes your organization?

45 responses

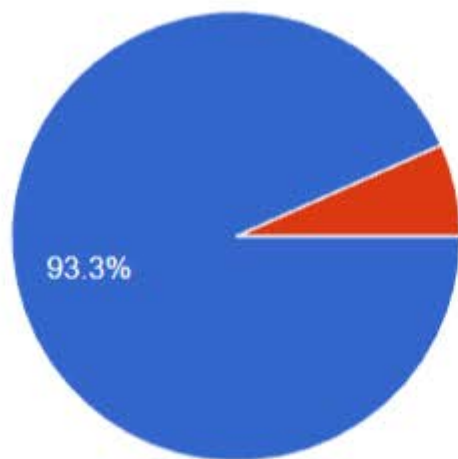


General Attitudes

The ToolBank (TB) has positively impacted our Community-Based Organization (CBO) by reducing costs related to **purchasing or renting** tools and equipment



45 responses

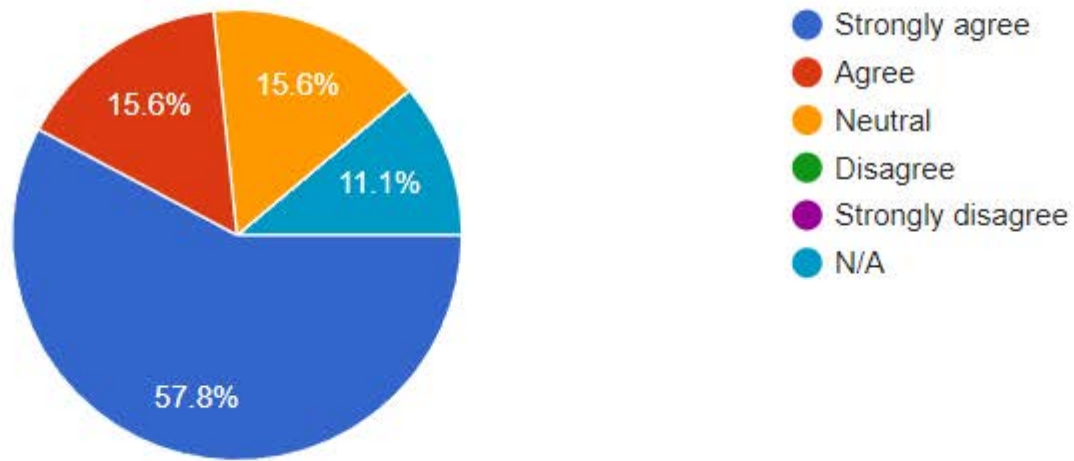


- Strongly agree
- Agree
- Neutral
- Disagree
- Strongly disagree
- N/A

The TB has positively impacted our CBO by reducing costs related to **storing** tools and equipment



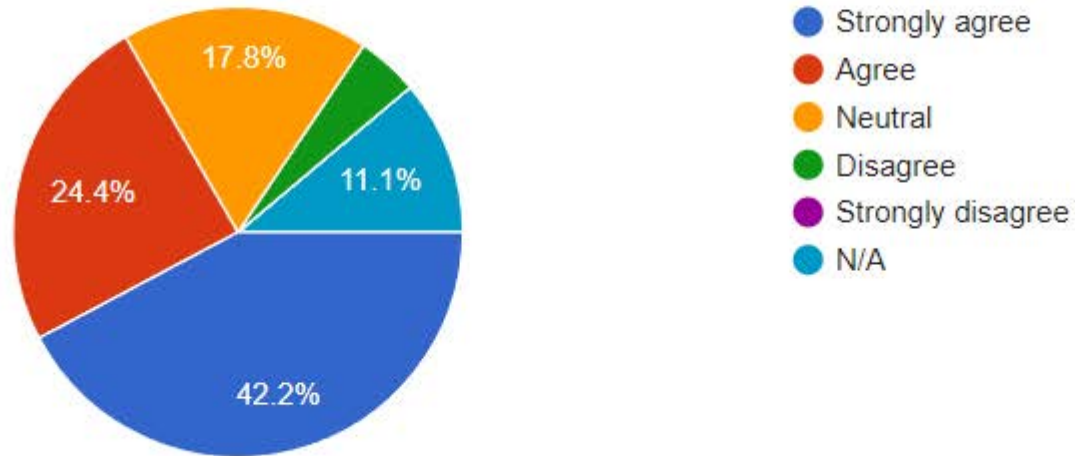
45 responses



The TB has positively impacted our CBO by reducing **staff time** to complete community projects



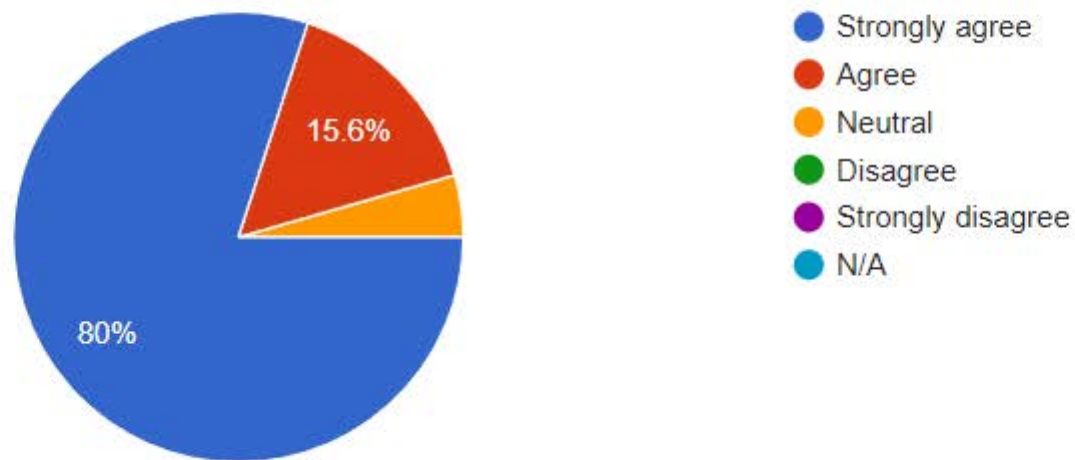
45 responses



Tools made available through the TB allow our CBO to complete higher quality events/projects without additional funding

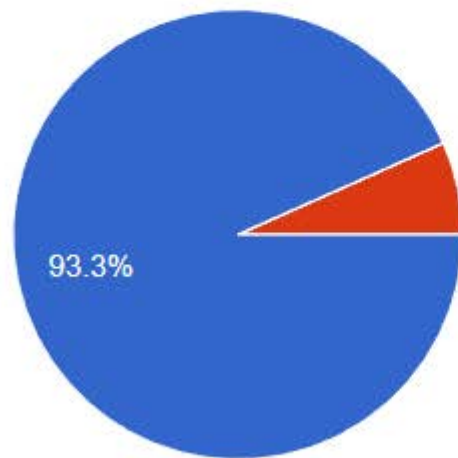


45 responses



The TB has positively impacted our CBO

45 responses



- Strongly agree
- Agree
- Neutral
- Disagree
- Strongly disagree
- N/A

What has been the most impactful aspect of the TB?

45 responses

Availability of Inexpensive Rental Equipment

You get me what I need on time and cheaply!

Renting equipment from the TB has enabled us hold events that we wouldn't have been able to afford to do without the discounted rentals.

The ease, availability and low cost of renting equipment through TB.

Easy equipment rental such as tables and chairs for events. The process is simple and the staff is so darn nice. It's simple and easy.

The TB has allowed us to host volunteer events that create green space throughout Baltimore City and that help our farm make produce and healthy foods available to those most in need. We also have been able to partner with the other organizations to come together for service days, without the toolbank it would be very challenging for our organization to provide tools to make these projects happen.

What has been the most impactful aspect of the TB?

45 responses

Availability of a range of tools & games for an organization with limited storage space and operational budget is a wonderful resource to have access to. provides efficiency and lowers overhead while skirting complex operational dynamics that aren't easily changed.

Availability of infrequently used, high quality tools to borrow at a nominal fee instead of purchasing to use just a few times per year.

Higher quality projects/events without additional funding

We are able to set up and complete community service projects quicker as we only need to supply manpower, and it is inexpensive to rent the tools we need. The staff at the TB is also very easy to work with.

We can get the quantities of supplies needed for larger volunteer events.

Affordable tools and equipment rentals

Customer service! The TB has an amazing team and are flexible with accommodating last minute changes.

What has been the most impactful aspect of the TB?

45 responses

Customer service! The TB has an amazing team and are flexible with accommodating last minute changes. TB is definitely an asset to grassroot organizations and Baltimore City as a whole.

Low cost tool rental

The amount of tools available, the ease of getting them, low cost to rent

The flexibility and expertise with tool renting

The ease of ordering and returning. Rachel and her team are so hopeful and kind

Reducing costs of purchasing/renting tools coupled with alleviating our lack of storage for tools

Availability to tools, and supplies that would normally be cross prohibitive for our organization

Borrowing tools for large volunteer events that require more, for example, shovels than would be reasonable to normally keep on hand. It's also great for the kinds of tools you only use at most once a year. How cool is it that y'all have a cider press?

What has been the most impactful aspect of the TB?

45 responses

The wide variety of tools and equipment available

How y'all have such high quantities of basics and how y'all even have the weird stuff (cider press)

Availability of a huge range of tools to support our second Saturday events

There is equipment we use infrequently (e.g. tables and chairs) that it wouldn't make sense for us to purchase and store only to use once or twice a year. Our TB membership saves us money and storage space, and it is a vital part of the sharing economy ecosystem.

Access to the tools we need at an amazingly reasonable price.

The ability to do a lot more with a smaller budget when we get an influx of volunteers to help out. Also the use of power tools that we only need once in a very long time is very helpful as well.

Cost and service are the most impactful aspect of the TB.

What has been the most impactful aspect of the TB?

45 responses

the rental prices and the diverse inventory of tools

Tool Bank has allowed MEC to offer a broader range of higher quality events to our neighborhood partners.

We have been able to reduce our local inventory , thus reducing storage fees in exchange for renting high quality tools at a greatly reduced fee from the ToolBank

The incredibly efficient process for acquiring the tools needed and the connections fostered.

Frequently found unusual tools available that were necessary to complete projects. Such as tillers. Especially impactful for events that required microphones and speakers and chairs...

The staff is wonderful and it is very easy for ordering and pickup. We used prior to the pandemic and then didn't use again until recently and it was the same quality!

What has been the most impactful aspect of the TB?

45 responses

Being able to rent a large number of tools specific to the task the Goshen Farm Preservation Society will undertake. For example, having a large group of local High School student assist in a conservation project at our property.

Use of tools for events and at times when we have a higher workforce

The ToolBank is an invaluable resource for projects in Baltimore, and our organization works across the country so we have amazing experiences with toolbanks in other cities where they exist and we see that there is a huge difference in expense and time of our own CBO and the CBOs we partner with in areas with no ToolBank access.

We have saved money on purchasing tools while providing our volunteers all needed tools for events

Access to large amounts of tools for our volunteer force! We have some tools of our own, but often find that we need 30+ of one type of tool to accommodate our volunteers

The Baltimore Community TB allows us to be flexible with volunteer groups and plan better projects because we do not have to buy and store tools that we would use sporadically through out the year.

What has been the most impactful aspect of the TB?

45 responses

The Baltimore Community TB allows us to be flexible with volunteer groups and plan better projects because we do not have to buy and store tools that we would use sporadically through out the year.

Prompt service, array of equipment and good organization of material for use.

We sometime have last minute request and the TB always help us.

Their flexibility and responsiveness is amazing. There have been times, several times, that we have ordered tools the day before we need them. The TB staff has them ready in the morning...They are amazing!

Dramatically reduced price of renting expensive tools.

access to affordable tools, ease of signing up the account and ordering

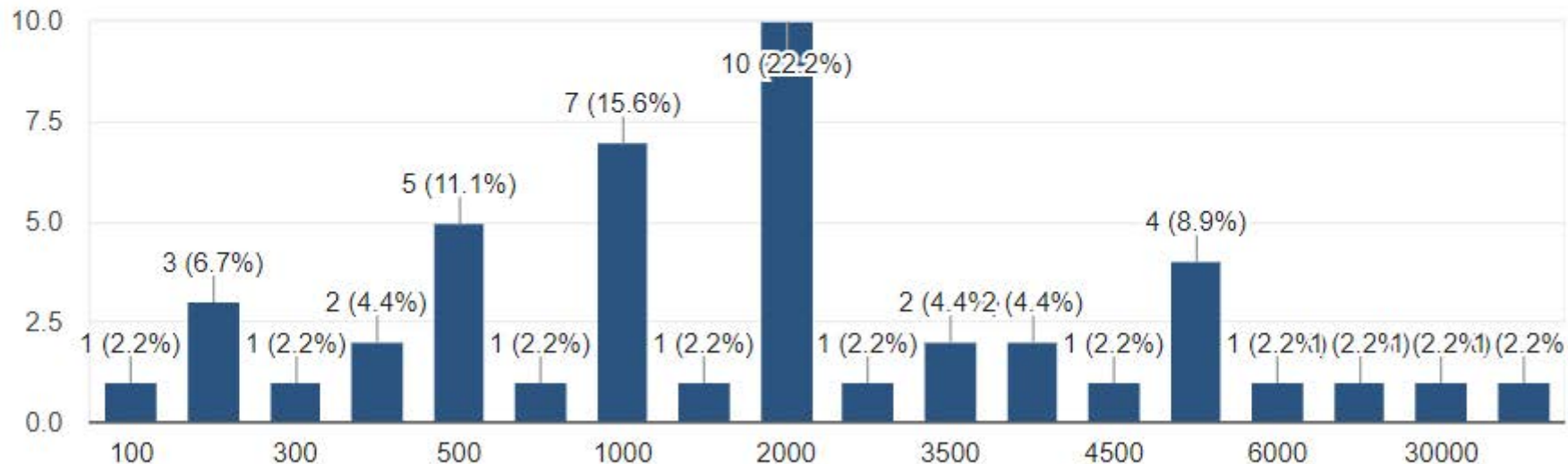
The ability to use ToolBank tools for our community litter clean-ups not only saves money and helps improve our physical environment, it also brings our neighbors together and strengthens our community on an interpersonal level. The regular clean-ups are an accessible way for new neighbors to meet people and begin to feel at home in the community sooner.

Economic Benefit

If the TB did not exist, how much would you spend purchasing or renting tools and equipment in an average year?



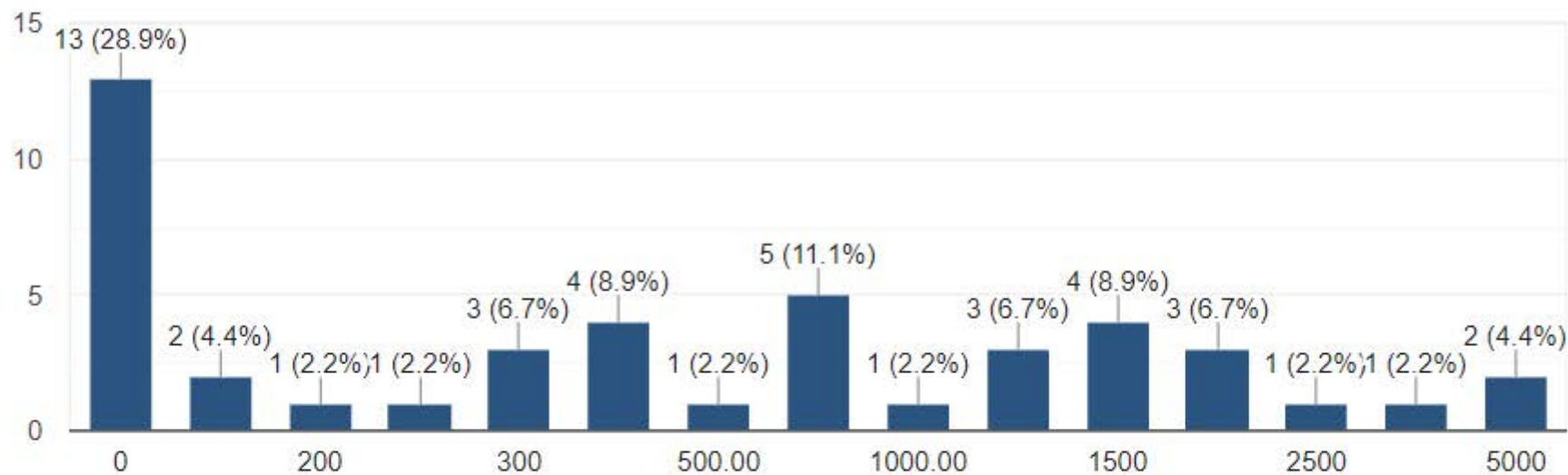
45 responses



If the TB did not exist, how much would you spend on storage of tools and equipment in an average year?



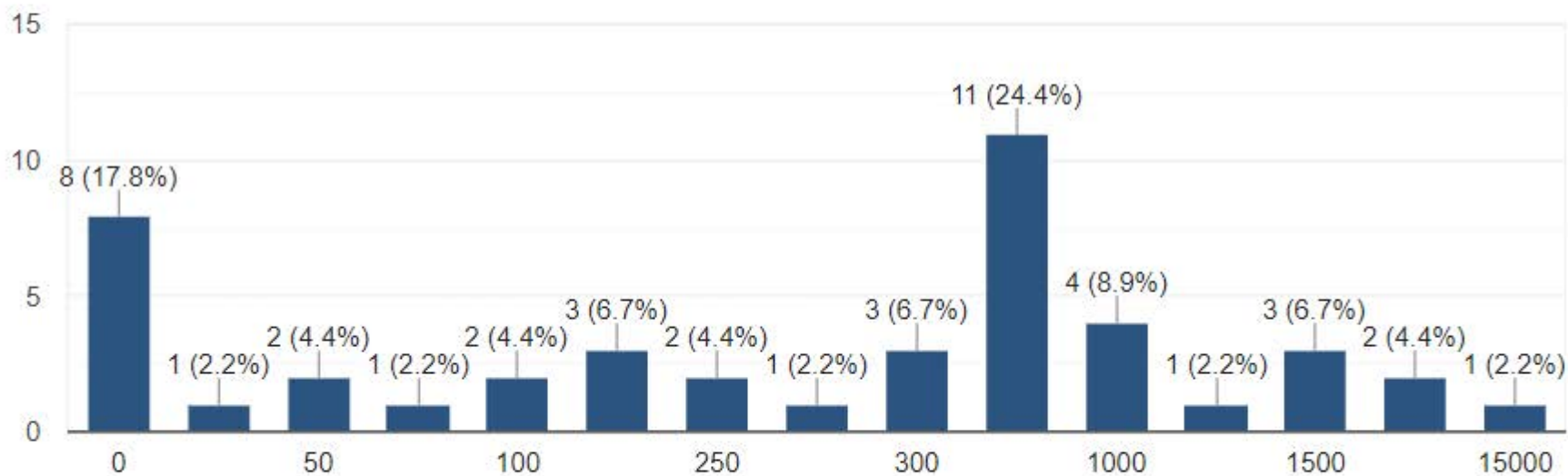
45 responses



If the TB did not exist, how much would you spend **maintaining** tools and equipment **in an average year?**



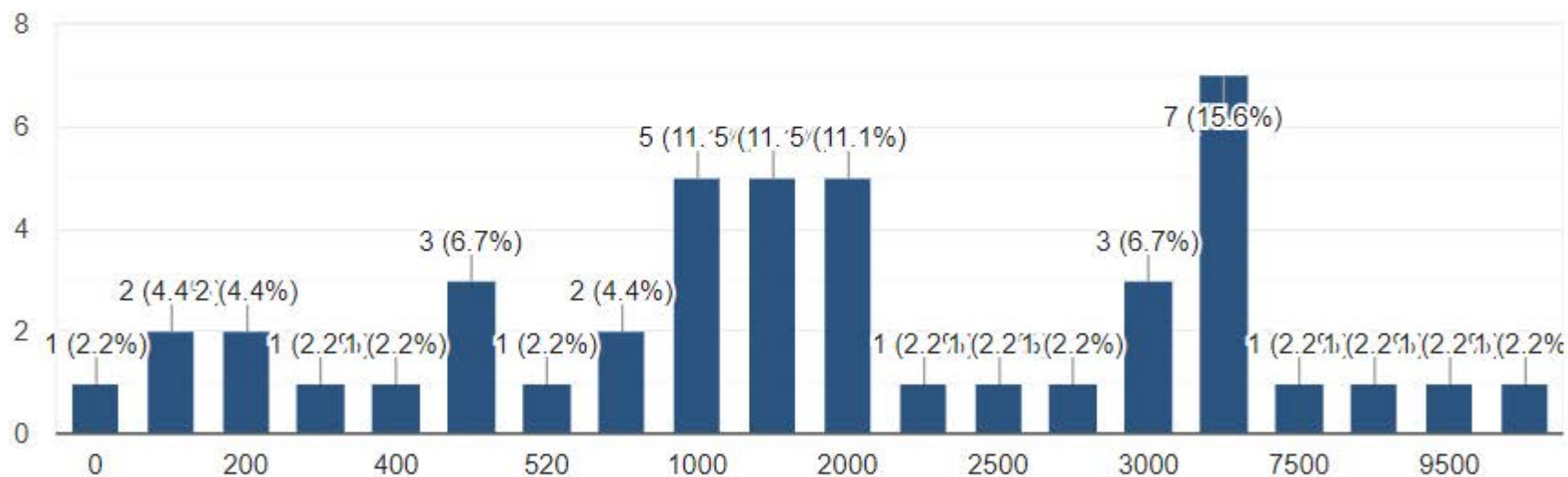
45 responses



Reflecting on your events **in the past year**: If the TB did not exist, how much funding would your organization allocate to buying, storing, tracking and maintaining your own inventory of tools and equipment?



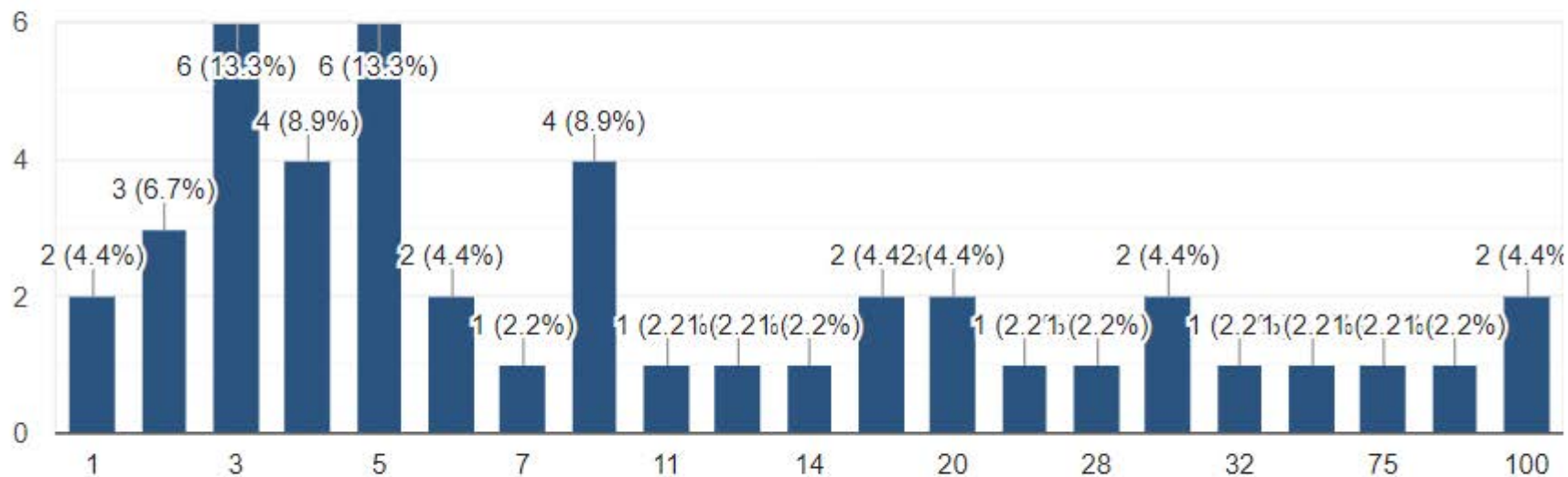
45 responses



In the past year, how many community events did your organization host?



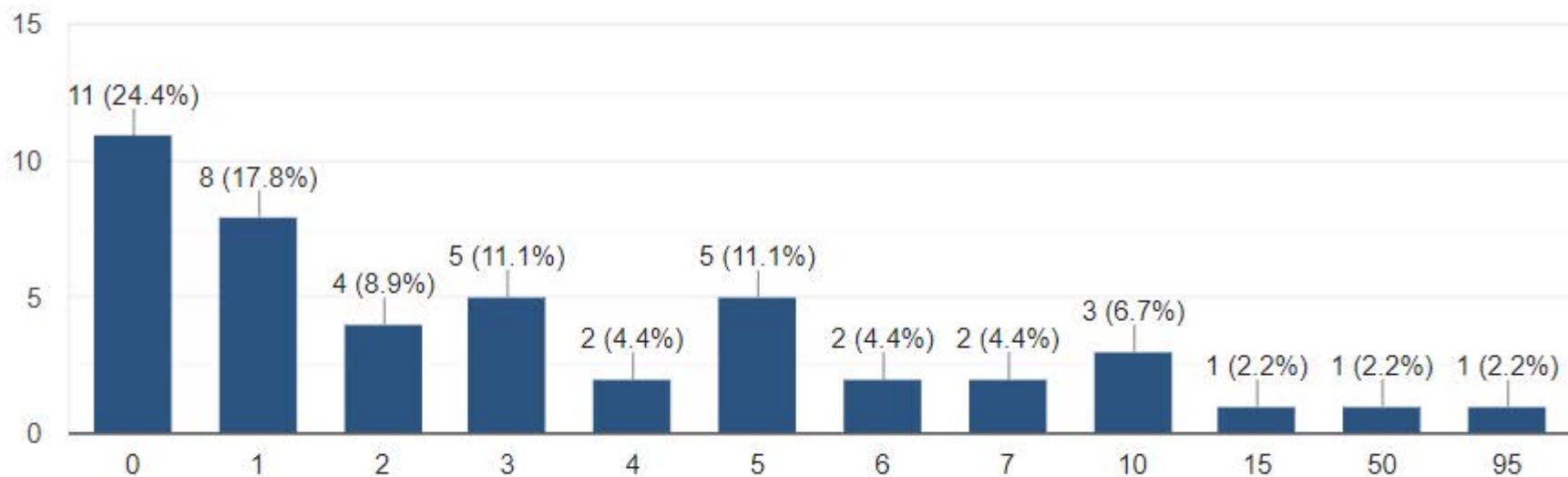
45 responses



If there were no TB, how many of your events **in the past year** would you **not** have hosted for any reason?



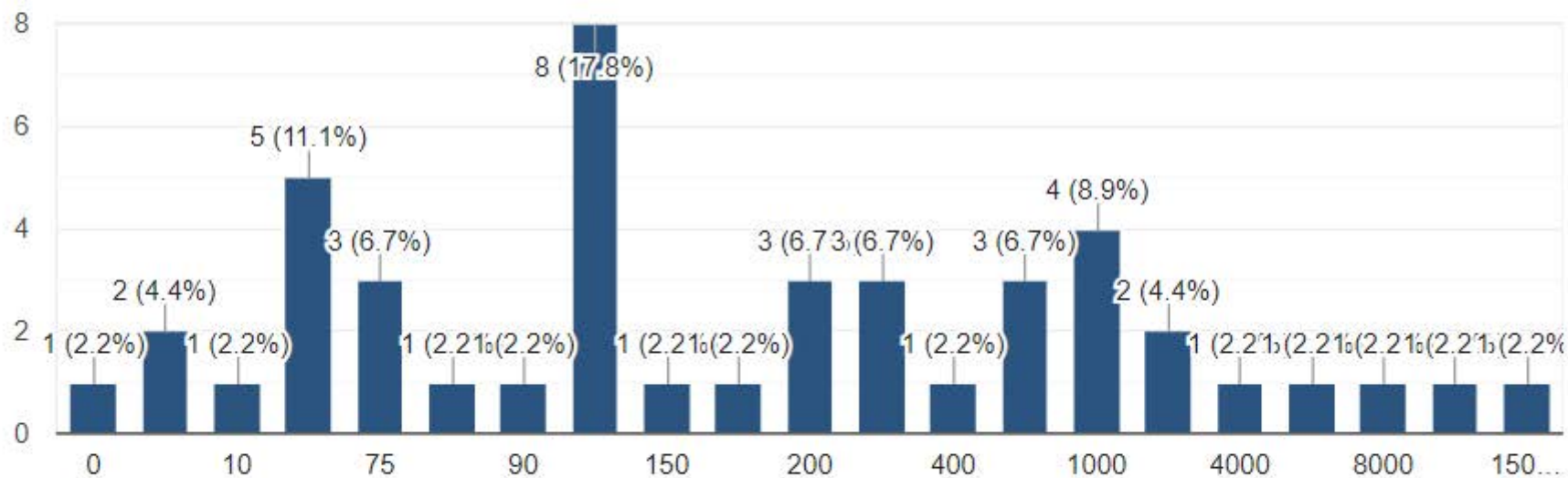
45 responses



If there were no TB, how many of your constituents, including volunteers, members, and event attendees, would have been negatively impacted **in the past year**?



45 responses

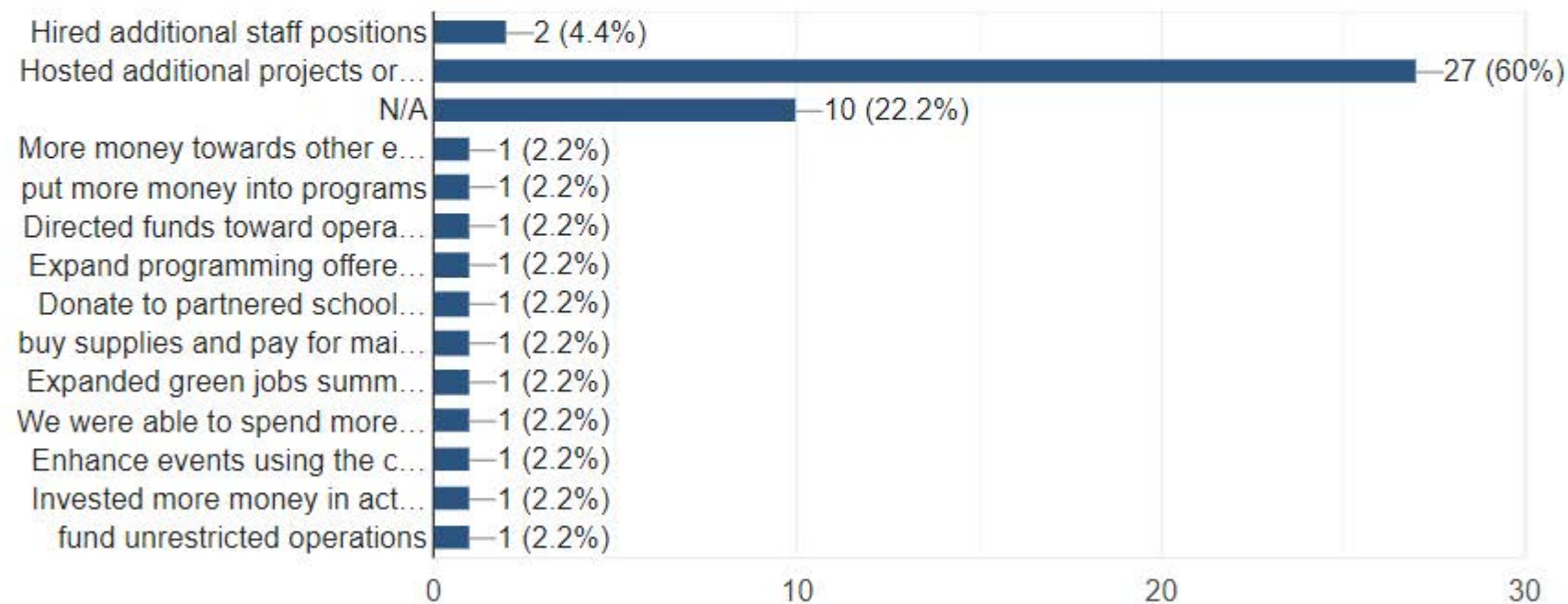


Community Impact

With the money you have saved on purchasing, storing, and maintaining tools and equipment through the TB, what have you been able to accomplish?



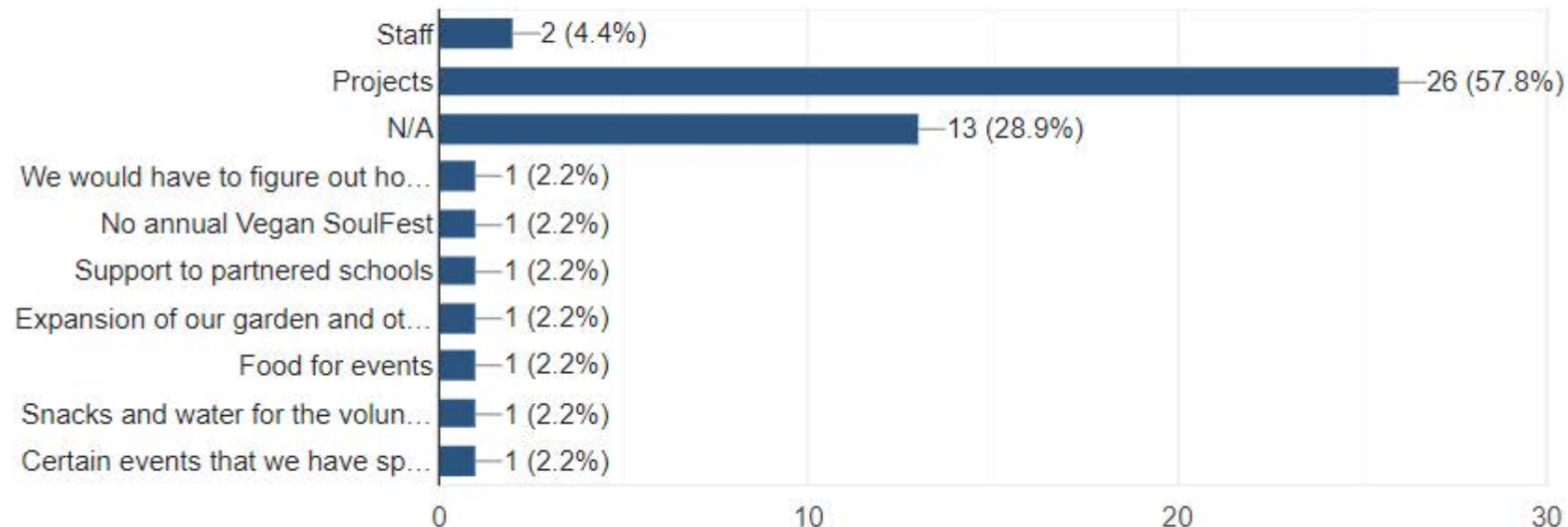
45 responses



Without the TB, what would you **no longer** be able to fund?



45 responses



If you answered 'staff', how many positions would be impacted?

2 responses

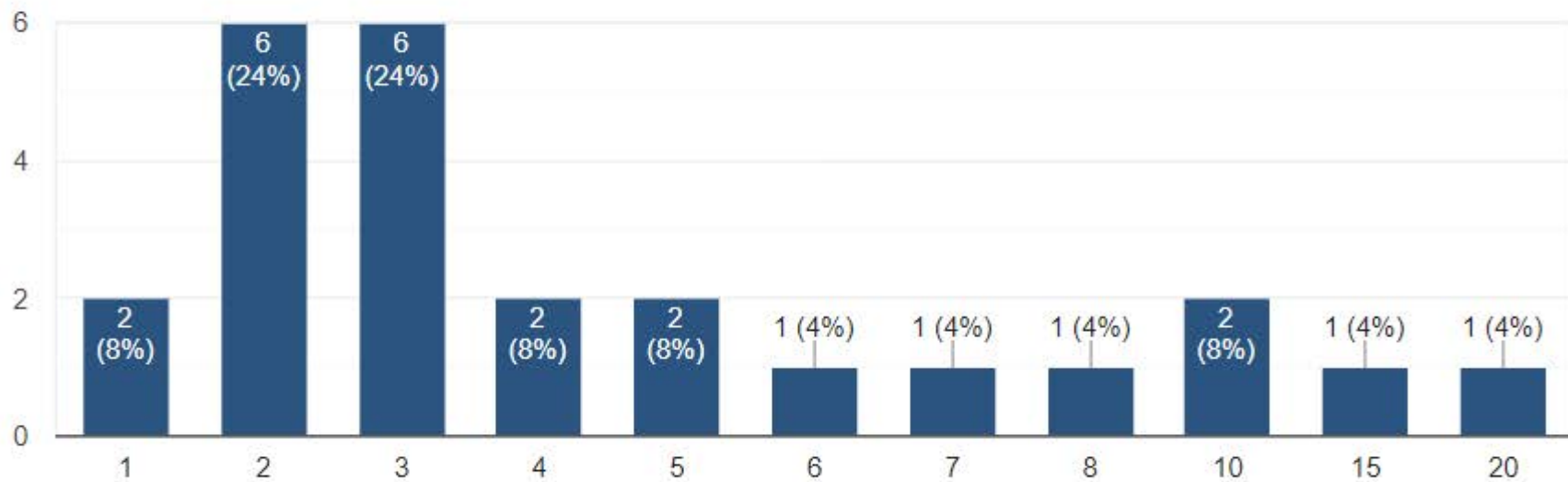
3

0

If you answered 'projects', how many projects would be impacted?



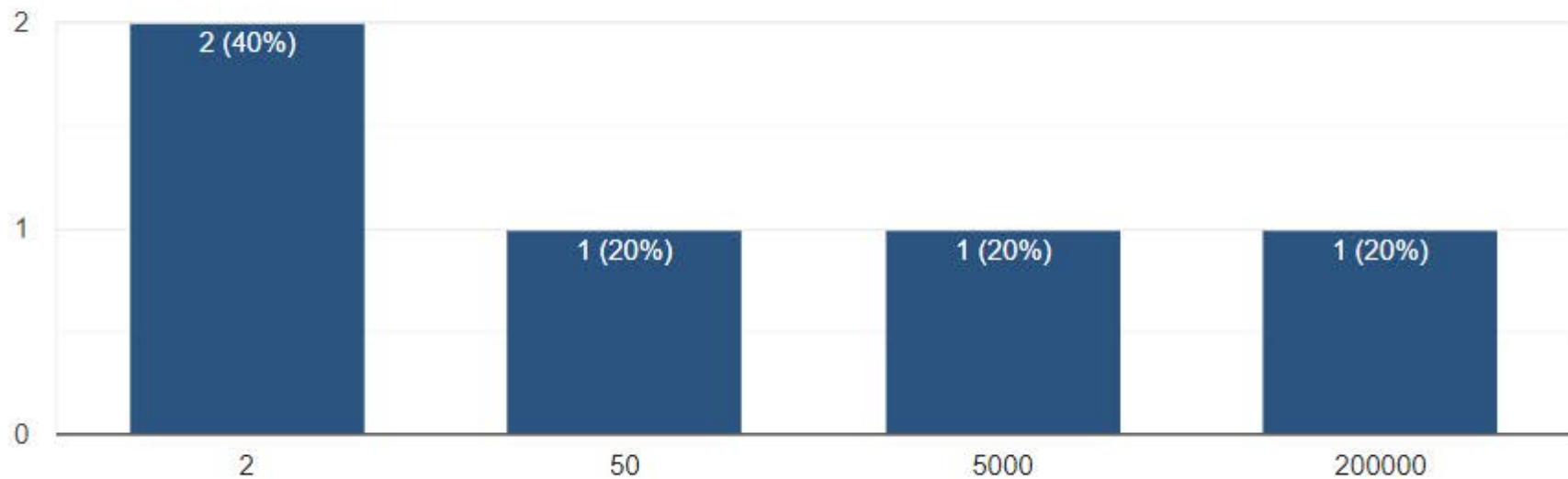
25 responses



If other, please quantify the impact:



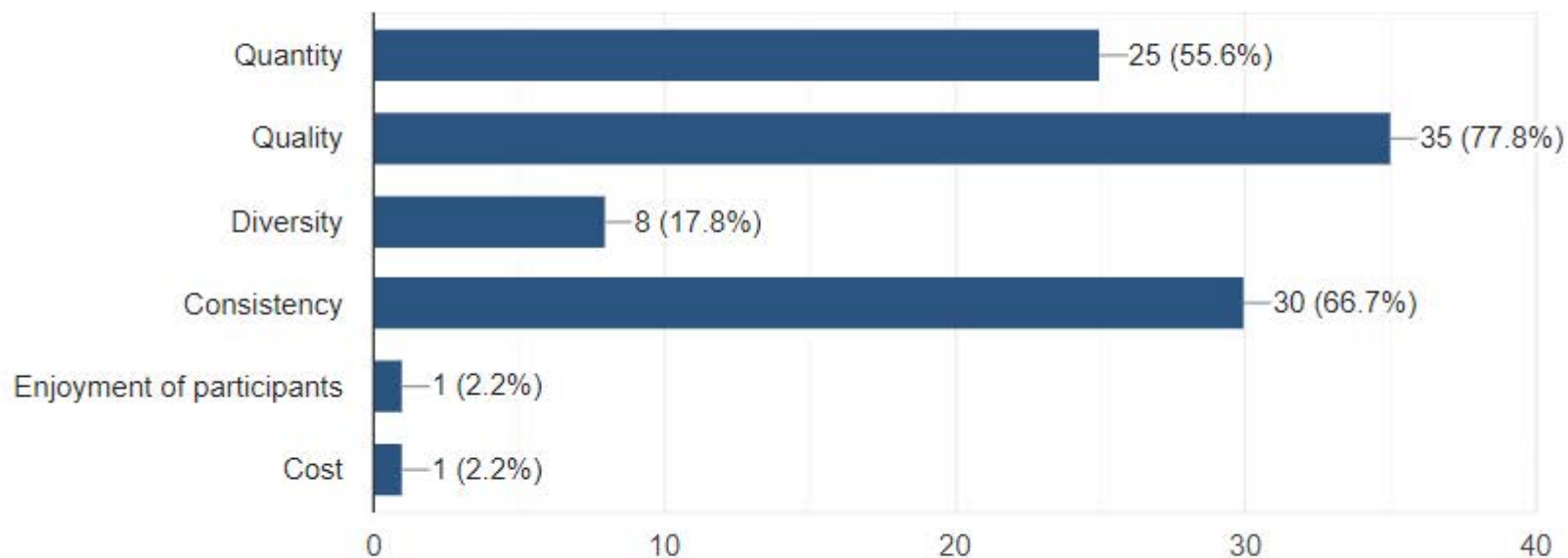
5 responses



Without the TB, which of the following are ways that your **community events** would be impacted? (check all that apply)



45 responses



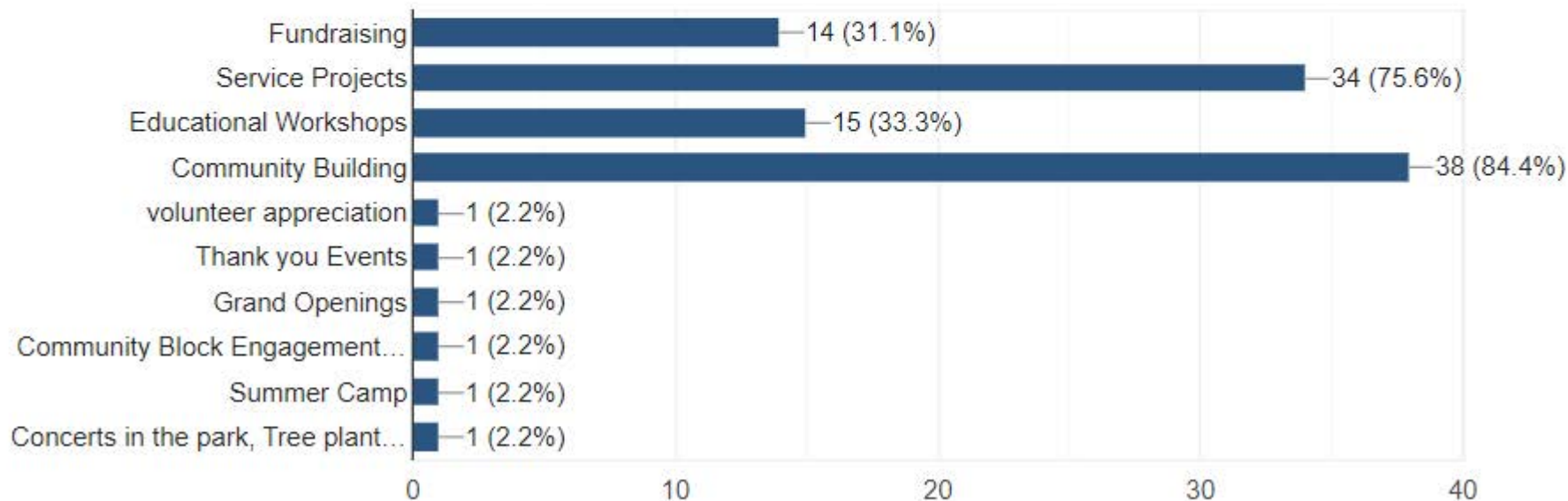
Fundraising

Which of the following types of events have TB tools and equipment helped your CBO complete?



Copy

45 responses



If you use the TB to support your fundraising events, **in an average year**, what have been the outcomes of these fundraising events?

Example: "We raised \$20,000 at our annual fundraiser and hosted 150 people."

19 responses

n/a

N/A

We raised \$10000 at our annual fundraiser and hosted 125 people

I apologize I am not sure of this number

We raised 30,000 at our annual event and hosted 500 people

Did not use for fundraising.

We raised \$400,000 at Vegan SoulFest and hosted 12,000 people

We raised \$10,000 at our fundraiser and hosted approximately 100 people

We have an annual festival for about 3000-6000 people

To your best estimate, what percent of your event expense budget was saved by using TB equipment at your event?



45 responses

